

AMP 235 Installation Guide

Please take a moment, read and analyze this manual before you install the Amplifier in your carputer enclosure. Often times, rushing into installing the unit can result in serious damage. Always check the polarity of your wires with a voltmeter.

Avoid using the cigarette plug as a power source, often times the contacts are not capable of delivering a stable high current to your PC.

Features:

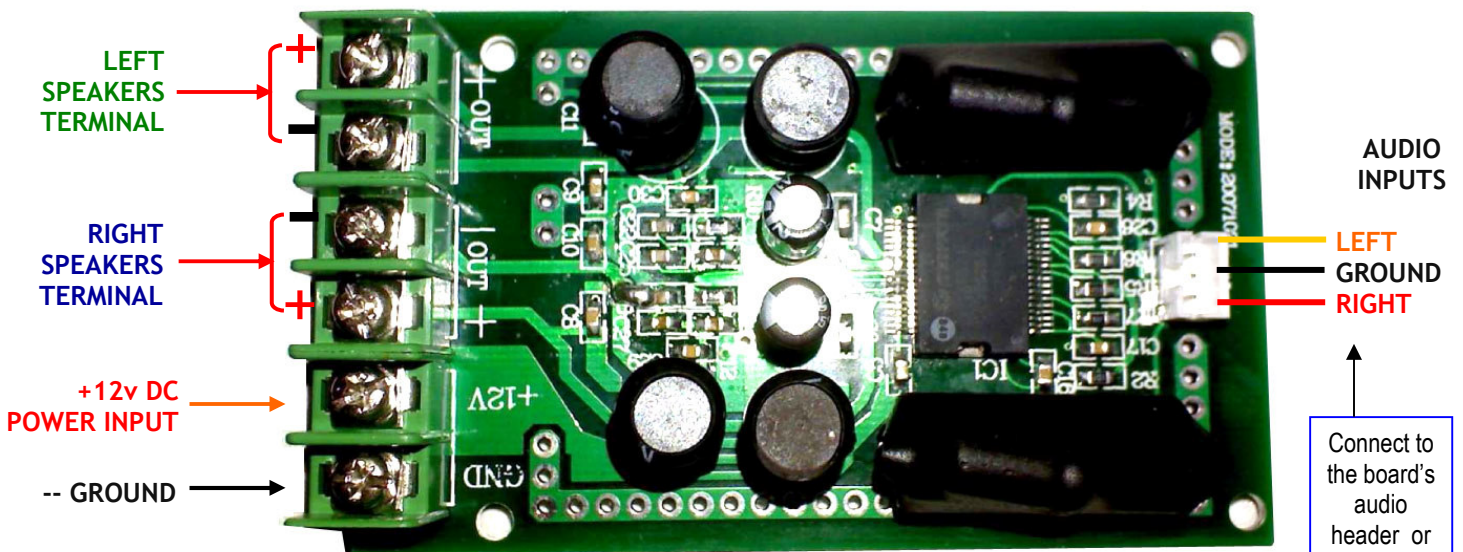
- Open frame low heat power amplifier
- Single power supply operation
- "Audiophile" quality sound
- Turn on/off pop reduction
- Over current protection
- Over temperature protection
- Bridged outputs

Specs:

- 11.0 to 14.6DC V wide power input
- 2x35 Watt
- Dynamic range 102 dB
- High efficiency
- 88% @ 15 Watts
- 81% @ 25 Watts
- Signal input connector cable supplied

The AMP435 has been designed to work along with many electronic devices such as radios, dvd/cd players, etc.

AMP 235 DIAGRAM



FULL COLOR VERSION OF THESE GUIDE CAN BE DOWNLOADED FROM:
http://www.bybyte.com/blackbox/amp_guide.pdf