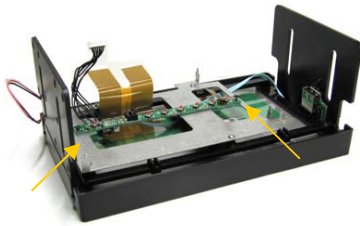


### STEP 11

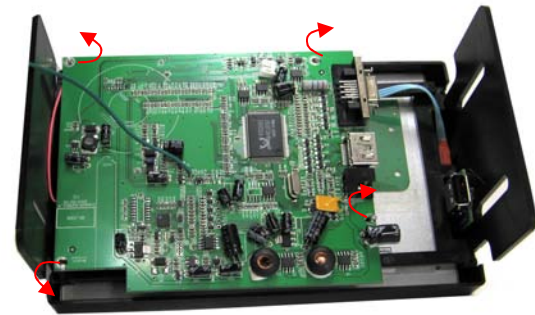
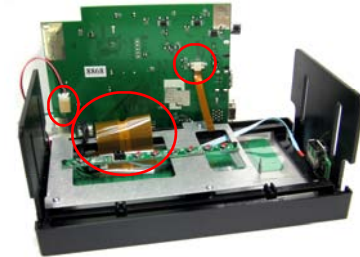
Reuse 2 flat head screws from the Lilliput housing to secure the Buttons Board to the Support Plate



### STEP 12

Reconnect the Flat Ribbon, Touch Panel, Button Board and power cables.

**NOTE: Prevent bending the flat cables more than 2 times to avoid internal breaking.**



### STEP 13

Position the controller board and secure it by **bending outwards** the tips of the aluminum support plate

### STEP 14

Locate the SKS cable supplied with your LCD screen and cut the top 3 rings from the plastic sleeve as shown in these images. Be careful not to cut any of the wires. Connect the SKS cable to the lcd screen and test your assembly.



Detailed images can be found at: <http://www.bybyte.com/669assembly.html>



## Assembly guide for Lilliput 669GL lcd panel and LCD frame

The new ABS plastic lcd frame has been designed around the 7" Lilliput (Innolux Display) lcd panels. It will allow you to install the models EBY701, 629GL and 669GL (by using a modified "H" bracket). This guide is intended to be used as a reference. Please use at your own risk. Bybyte.com can not be found liable for any damages to your LCD screen due to improper installation.

Please use safety gear during the installation.

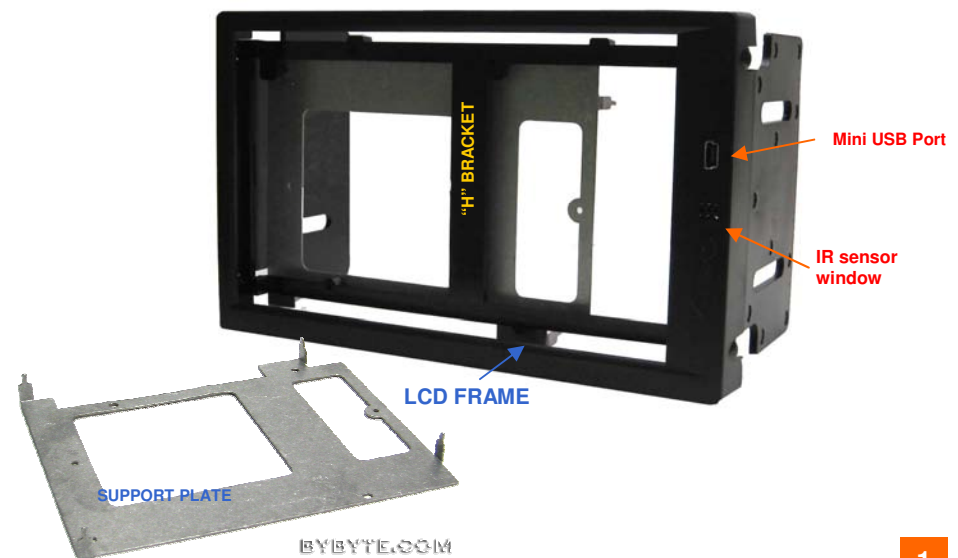
### TOOLS REQUIRED

- 1- Flat cushioning surface to avoid scratching the dash kit or LCD frame.
- 1- Phillips screw driver
- 1- Small cutting pliers



### IDENTIFY YOUR DOUBLE DIN DASH KIT

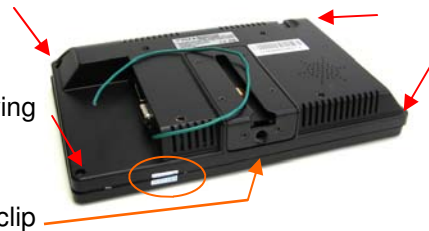
Assuming you already own a double din dash kit, identify the components included:



### STEP 1

Open your LCD screen housing by removing the 4 screws and cutting the QC seal.

Insert a flat tool in the middle to unlock the clip and separate the 2 covers simultaneously.



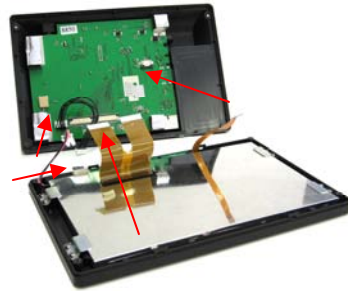
### STEP 2

Open the lcd screen and remove the 4 adhesive ground contacts.



### STEP 3

Disconnect the Flat Ribbon, Power, Button board and Touch Component cables



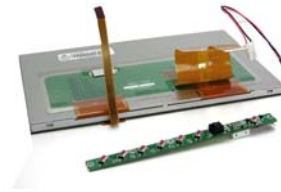
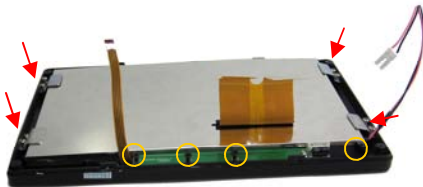
### STEP 4

Remove the 4 screws securing the controller board and disconnect the speaker connector.



### STEP 5

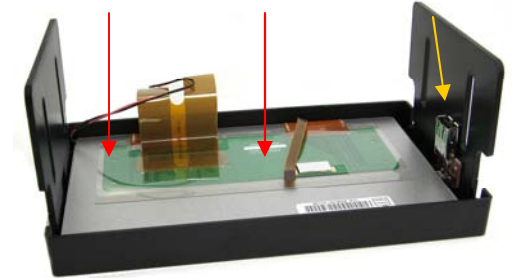
Remove the 8 screws securing the lcd panel and 4 screws of the button board.



The LCD panel and controller board are now separated from the housing.

### STEP 6

Insert the LCD panel into the LCD Frame. (USB port must be at the right hand side).



### STEP 7

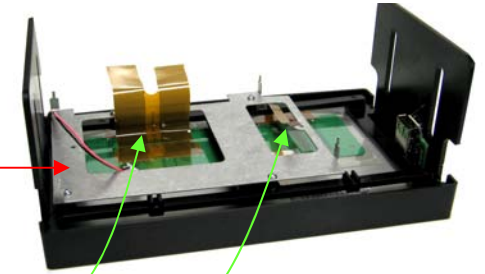
Carefully solder the IR sensor (provided with the lcd frame) to the button board, keeping the same polarity.



### STEP 8

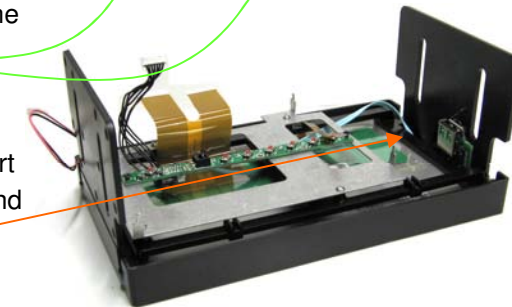
Attach the "H" bracket to the frame in the position shown.

The Flat cables of the LCD panel and touch controller must be inserted throughout the open areas on the Support Plate.



### STEP 9

Before securing the "H" bracket, insert the IR sensor between the bracket and the LCD frame as shown.



### STEP 10

Secure the bracket with 4 screws (Provided with your LCD frame).

