



**INSTALLATION INSTRUCTIONS:**

The new Bybyte plastic LCD frames are intended to be installed behind the OEM radio bezel or Double din Dash kit. The LCD frame will allow you to install your Lilliput 629-GL or EBY-701 (2008 Model) lcd screen on your car's dash and get an original look infotainment system.

Bybyte Infotainment Solutions does not assume any responsibility for damages caused to your vehicle or electronic devices due to improper installation. Please handle with care.

**REQUIRED TOOLS:**

- 1 - Small Phillips screwdriver



**FRAME COMPONENTS AND DESCRIPTION:**

- 1 - **ABS plastic LCD Frame:** This is the new housing for your LCD component.
- 1 - **ABS Plastic bracket:** Holds in place the LCD component and receives the circuit board.
- 2 - **ABS Plastic mounting tabs:** Will provide support to the frame on your car.



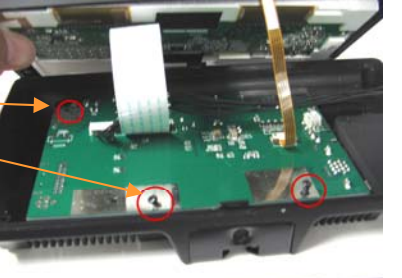






The kit also includes mounting screws and 6" flat ribbon cable to extend the IR sensor.

The frame's dimensions are: (mm)

Width	Height	Depth
177	107	71



1. Open your LCD screen housing by removing the 4 screws located at the corners 
2. Cut the QC seal and push and separate the cover simultaneously. 
3. Carefully open the cover and remove the circuit board's screws. 
4. Lift the back cover and disconnect the speaker from the circuit board. 
5. Remove the 4 screws and retaining tabs from the LCD panel, and the 3 screws holding the buttons board. 
6. Remove the LCD component from its housing and disconnect the buttons board. 
7. Using a fine soldering tip, remove the IR remote sensor from the board and attach it to the 3 pin flat ribbon cable supplied with the kit. Use the shrink wrap protector to prevent electric shorts. Make sure to keep the same polarity. 

8. Put the kit Upside down on a cushioned surface to avoid scratches.

9. Put the LCD component towards the left side of the frame as shown in this image.

10. Lift the circuit board to allow the installation of the bracket.



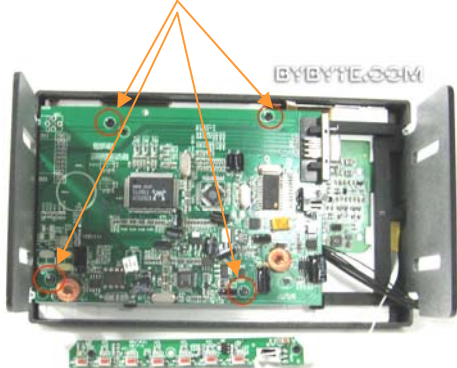
11. Install the IR remote component on the 4mm hole located at the right side of the frame and secure it by putting the bracket on top of the LCD component. This bracket will hold in place the IR and the LCD component.



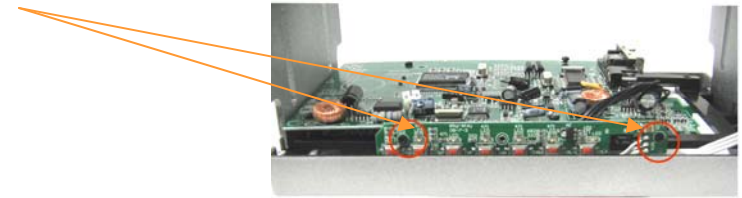
12. Re use the original screws to attach the bracket to the frame as shown in this image.



13. Laid the circuit board on top of the bracket and align the 4 holes shown to secure it with screws.



14. Now you can secure the buttons board to the bracket with two screws.



15. Trim the sleeve cover of the SKS cable before connecting it to the screen.

16. Your Screen can now be mounted behind the OEM radio bezel or on a Metra double din dash kit.

